

FAST AND EFFICIENT
FILTRATION
FOR ENVIRONMENTAL APPLICATIONS



SFS-24 SIMULTANEOUS FILTRATION SYSTEM



SIMULTANEOUS FILTRATION

UP TO 24 SAMPLES

COMPACT & ERGONOMIC DESIGN

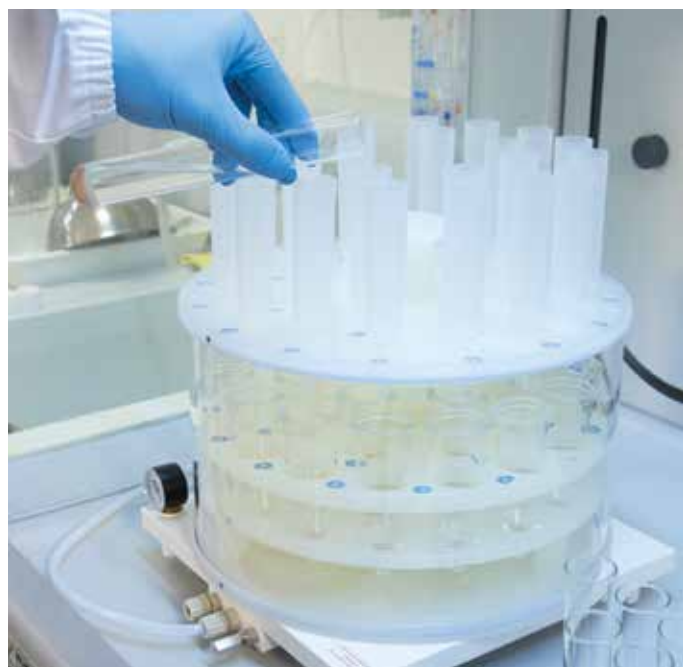
COMPLEMENTARY TO SOLVENT
EXTRACTION AND ACID DIGESTION



MILESTONE
H E L P I N G
C H E M I S T S

A FILTRATION SYSTEM TO SIMPLIFY & EXPEDITE YOUR DAILY WORK

The analysis of organic pollutants and metals in environmental matrices, such as soils and sediments, often includes a filtration step, either after a solvent extraction process or a leaching-type acid digestion. The conventional approach to filtration involves an old-style apparatus that negatively affects lab workflow and occupies valued space in the fume hood. The Simultaneous Filtration System (SFS-24) by Milestone overcome these limitations, improving the lab's productivity and reducing the fume hood space requirement. The SFS has up to 24 positions and uses inexpensive Milestone funnels, that are compatible with all commonly used solvents and mineral acids. This setup is combined with a vacuum pump and pressure manometer to accelerate and control the process, leading to an easier and faster filtration process.



*Filtration of soil samples
after microwave solvent extraction*

| SFS-24 PROCEDURE

The filtration procedure requires just a single manual step: the transfer of the processed sample solution into the Milestone funnel. The large volume (50 mL) of the funnel accommodates the sample solution, the reagent used for rinsing and the drying agent, required for organic pollutants analysis. In a few minutes, up to 24 solutions are filtered simultaneously and the solutions are collected into standard evaporation or volumetric flasks, ready for the next analytical step. The smart design of the SFS-24 dramatically reduces the occupied space in the fume hood and its unique rotating mechanism allows easy access to all positions, simplifying the handling and enhancing the lab workflow. The SFS-24 in combination with Milestone ETHOS systems provides superior utility to environmental laboratories.

24 SAMPLES IN A FEW MINUTES

HIGHER PRODUCTIVITY

SIMPLIFIED WORKFLOW

COMPLEMENTARY TO ALL ETHOS SYSTEMS

CAT398EN-002 • 2022-07



MILESTONE Srl - Via Fatebenefratelli, 1/5 - 24010 Sorisole (BG) - Italy
Tel: +39 035 573857 - Fax: +39 035 575498
www.milestone-srl.com - email: analytical@milestone-srl.com

MILESTONE INC. - 25 Controls Drive - Shelton, CT 06484 - USA
Tel: (203) 925-4240 - Toll-free: (866) 995-5100 - Fax: (203) 925-4241
www.milestone-sci.com - email: mwave@milestone-sci.com

MILESTONE GENERAL K.K. - KSP, 3-2-1, Sakado - Takatsu-Ku,
Kawasaki 213-0012 - Japan - Tel: +81 (0)44 850 3811 - Fax: +81 (0)44 819 3036
www.milestone-general.com - email: info@milestone-general.com

MLS GmbH - Auenweg 37 D-88299 Leutkirch im Allgau - Germany
Tel: +49 (0)7561 9818-0 - Fax: +49 (0)7561 9818-12
www.mls-mikrowellen.de - email: mws@mls-mikrowellen.de